



 EdgeWater

# We are the Ultimate Getaway.



The ocean is everything. Seven-tenths of this rock we live on is covered in water. It surprises us each time we see it. Each time we ride it.

And that's what we love about it.

There's no automation in our works. Expertise from builders that boat. It's more than a job, it's a calling. The sea knows that. That's why we build them like we do. We were the first to fully infuse a boat. A hull that goes for a lifetime. All composite building. We aren't for cookie cutting. Each boat has a personality and its own style.

Standard features that others call options. We just say they're included. There's no compromise on the innards of our boats — only the highest quality will work for the day in and day out on the roaring blue.

Adventures and memories should always be on deck. Continuing traditions that rest on the oldest living thing on the face of the planet. It's a big world to explore. It's the living infinite. Be part of it with us.

After decades at Boston Whaler, the iconic boatbuilder Bob Dougherty, elected to leave his position as the director of engineering to form a new, superior boat.

In 1992, Dougherty created a company that would transform the way the industry builds boats.

Today, that company is EdgeWater Boats.

For over twenty-five years, EdgeWater has developed some of the marine industry's most advanced structural designs. Every boat is a new creation, but it stemmed from the innovation of a couple of craftsmen that wanted to build the best boat on the water.

That creed still exists.

# **Boatbuilding Pioneers**



# Single-Piece Infusion

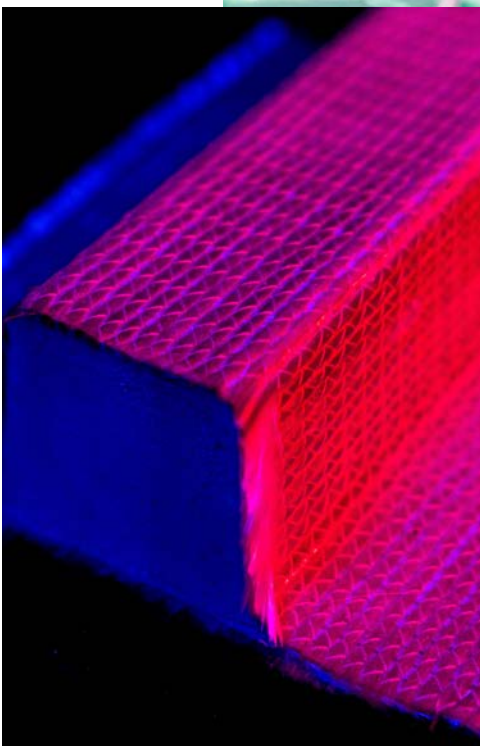
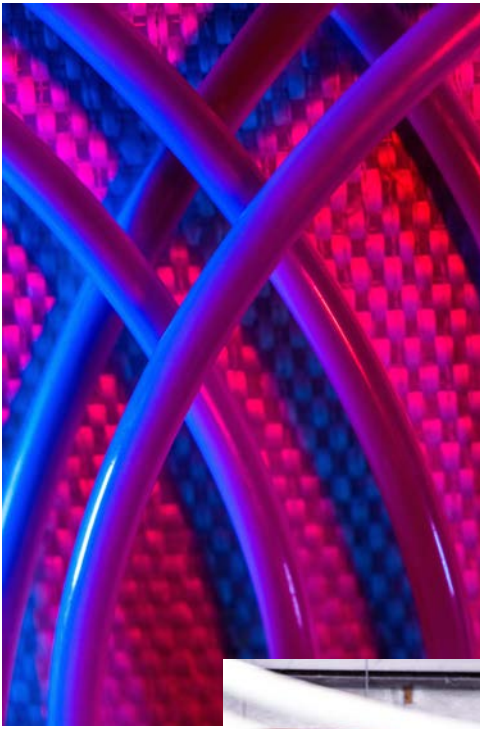
We are the founders of this boatbuilding science. The Single-Piece-Infusion (SPI) process puts us above the rest. We do it every single day.

## *What is SPI?*

It's a closed vacuum resin process that combines composite and foam structural stringers, engineered knitted fiberglass fabrics, and vinylester resins to make our hulls strong and perfectly weighted. The crux of it: a one-piece, unsinkable experience is created. A boat-sized — literally — plastic bag is wrapped inside the interior of the hull. An air-vacuum seals the bag at two atmospheres different than our own. Then the resin is pushed into the hull to create that single piece.

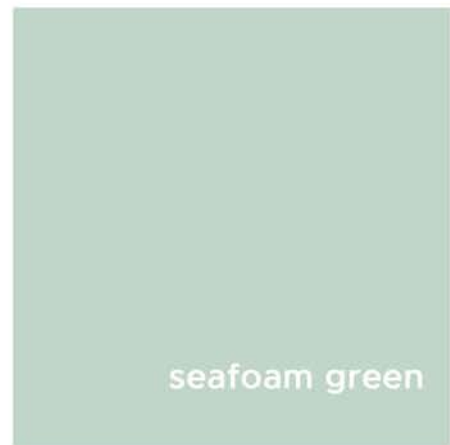
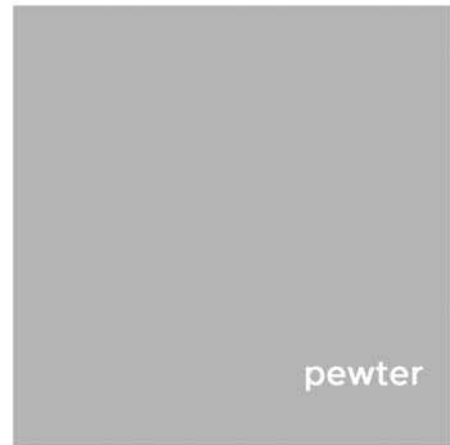
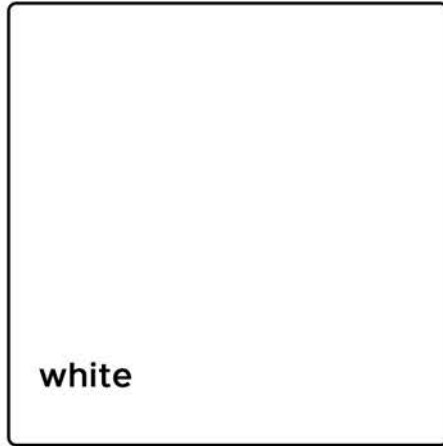
It's all evenly distributed. Our process creates better control and weight variance, in turn, making it a lighter and stronger boat on the water.

Once that process is completed, our high-tech crane system pulls the hull from the mold, like an apple pie from its tin wrapping. Ready to serve. 4



# Gel Coat Color

Take your pick of the finest marine gel coat that will take on any seas for years to come.



# The Fleet





# Heritage Series

They have legacy attached. Heritage in its chines. The beginnings of our company that still run the waterways.

It's just the right combination of our deep V hulls with superior performance along with innovative design and engineering packed into a smaller boat.

These boats handle the island hop and chop — in style.

# 158CS

This boat was designed for adventures beyond the jetty or shuttling provisions to a private island picnic. Its rugged construction and deep-V hull give it the feel of a much larger boat. The versatile 158CS packs the big boat features into a compact package, such as a self-bailing deck, hefty-functional cockpit, ample storage, and the reliability of Yamaha Power. When you head out in the 158CS for island adventures or offshore fishing, enjoy the day with complete confidence.



# 158CS

LOA //	15' 1"
BEAM //	6' 7"
DRAFT //	10"
DRY WEIGHT (W/O ENGINES) //	1130 LBS
FUEL //	13 GAL
MAX HP //	90HP

"An ideal tender or companion boat for your home on the lake. It's completely unsinkable, which gives parents a lot of confidence when the teenagers ask for the keys."

- *Boating Magazine*





1  
7  
0  
C  
C

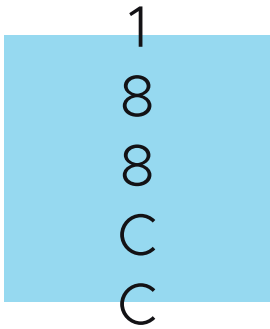


It's a small boat built in a big way, the 170CC is a fully-featured center console boat that takes you anywhere. Plush seating for six with loads of storage surrounded by unsinkable construction. Powerful enough to shuttle six, but thoughtful enough to do it safely.



LOA //	16' 10"
BEAM //	7' 3"
DRAFT //	12"
DRY WEIGHT (W/O ENGINES) //	1700 LBS
FUEL //	30 GAL
MAX HP //	115HP

"Robust building techniques and a simple standard rig make this a good first-boat choice for young families and juniors."  
- *boats.com*



The rougher the weather, the more you will appreciate cruising in a 188CC. Thanks to a deep V hull design, it performs brilliantly in the chop, shrugging off waves and keeping all your passengers dry. Whether you want to take the entire gang out to an island or run offshore to fish or explore, the 188CC gives you the versatility and confidence for any adventure.



LOA //	18' 8"
BEAM //	7' 9"
DRAFT //	13"
DRY WEIGHT (W/O ENGINES) //	2100 LBS
FUEL //	43 GAL
MAX HP //	150HP

"As an all round premium fishing platform with all the bells and whistle, this rig doesn't get much better."  
*- Fishing World Magazine*

# 208CC

This fishing boat has uncompromising perfection for a family boater.

EdgeWater has redefined what a smaller fishing boat can do. Tackle the toughest conditions, while fishing offshore, diving the reefs or cruising the harbor. The 208CC is a fishing boat that features an expansive cockpit and a large walk-in console with portable head. Gunwale rod racks, rod holders and several options for live wells maximize every inch of usable space in this fishing boat.



# 208CC

LOA //	20' 6"
BEAM //	8' 6"
DRAFT //	17"
DRY WEIGHT (W/O ENGINES) //	2500 LBS
FUEL //	87 GAL
MAX HP //	250HP

"I love my 208. It runs great and it's a solid-built hull. Runs through waves like a much larger boat."  
 - Joshua B., 208CC Owner





# Center Console Series

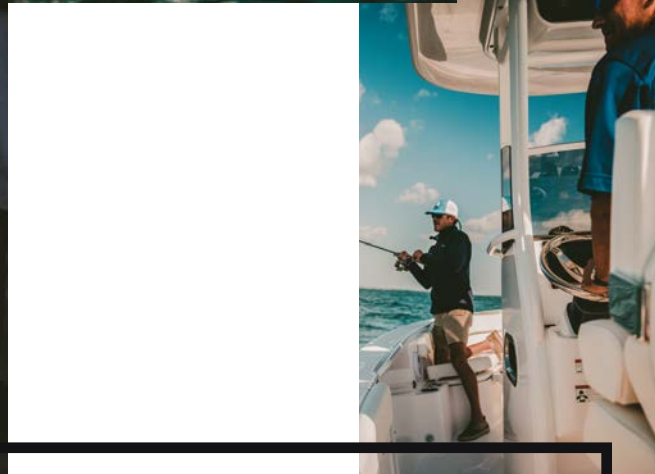
Fishing. Family. Fun. This was our mantra for the series. These boats are practical in use, but eye-catching when on the run. They are chock-full of standard features and options that can fulfill the exact dream boat of your needs.

From weekend getaways to day-adventures, these boats are built with that in mind. Storage every which way you look, lush seating, and fishing amenities place these boats above the rest.

"I love that just about everything comes standard: the powder coating, the luxury leaning post/helm seating with its integrated bolsters and armrests, bow table and hideaway towing pylon, all on board. After all, if they're such good ideas, just include them."  
- *Boating Magazine*

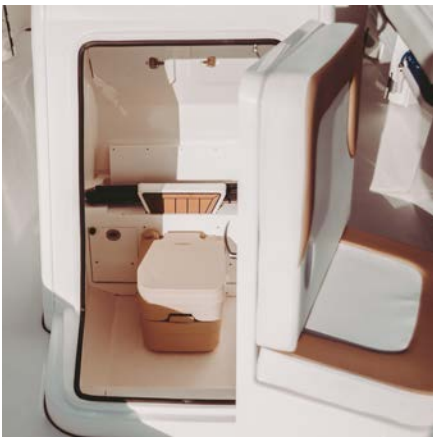
---

2  
3  
0  
C  
C  
C



**230CC**

*Gunwale rod racks. Live baitwells. Hardtop with rod holders. Ready to fish.*



Tackling the perfect blend of fishy and family, the 230CC delivers. A battlewagon of a boat that runs through the rough conditions with ease. This boat keeps quiet during drift-fishing, but also can ramp up for maneuvers without a hitch. Storage throughout and rod holders abound makes this boat ready for action, while being family friendly.

2  
3  
0  
C  
C



LOA //	24' 6"
BEAM //	8' 6"
DRAFT //	15"
DRY WEIGHT (W/O ENGINES) //	4100 LBS
FUEL //	110 GAL
MAX HP //	300HP

"Safe, durable and light – quite a performer."  
- *Boating Magazine*

2  
4  
5  
C  
C



**245CC**

*More space for more people,  
but still plenty of storage for  
rods, tackle and tuna.*



The 245CC is unsinkable with all composite construction, roomy cockpit and a trailerable beam. Family boaters and anglers will love this boat's deep V hull, perfect for rough conditions. It's just the right mix of the comfort features of the 230CC with the looks and offshore capabilities of our 262CC.

2  
4  
5  
C  
C



LOA //	24' 6"
BEAM //	8' 6"
DRAFT //	21"
DRY WEIGHT (W/O ENGINES) //	4200 LBS
FUEL //	140 GAL
MAX HP //	400HP



"An exceptional marriage of performance, style and comfort in a middleweight contender poised to match larger competitors blow for blow."

- *Salt Water Sportsman Magazine*

2  
6  
2  
C  
C



# 262CC

*Sleek, modern lines and a distinctive console and hardtop styling.*



This is a fullback of a boat, but runs smooth and stable. The performance makes the 262CC one of the top offshore boats available on the market today. This boat makes all jobs for these offshore boats a breeze. Fish or cruise in comfort with a walk-in console complete with head, sink, shower and extra storage. The 262CC exceeds all expectations of any other boat.

2  
6  
2  
C  
C



LOA //	26' 5"
BEAM //	9' 3"
DRAFT //	21"
DRY WEIGHT (W/O ENGINES) //	5500 LBS
FUEL //	163 GAL
MAX HP //	500HP

"The 280CC has great features and a well-thought-out layout.  
Bunk below is great, no one has that feature in a 28-footer."  
- John, 280CC Owner, Maryland

"Great features. Terrific  
performance."  
- *Boating Magazine*

2  
8  
0  
C  
C



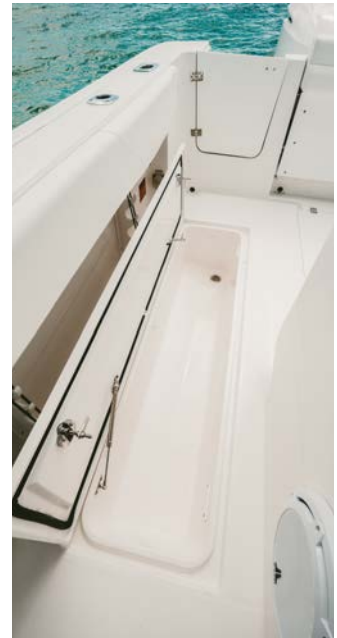
**280CC**





This 280CC coupled with Single Piece Infusion or SPI, leads to a strong, superior performing boat in all conditions. A "ClearView" custom engineered windshield was specifically designed for this boat allowing for an improved line of sight for spotting that coveted game fish or added comfort when pulling up to a secluded island. This boat is sure to provide for everyone you bring along with its plush walk-in console complete with a head and a pull out shower.

2  
8  
0  
C  
C



LOA //	28'
BEAM //	9' 6"
DRAFT //	20"
DRY WEIGHT (W/O ENGINES) //	6900 LBS
FUEL //	200 GAL
MAX HP //	600HP

"The bottom line: Edgewater 320CC is a top-shelf center console with excellent fishability... all that offers a rare level of construction and performance."  
- BDOudors.com

3  
2  
0  
C  
C

"My Edgewater 320CC has lived up to all my expectations."  
- Mark, 320CC Owner, Florida



# 320CC



Where weight is critical for superior hull performance and fuel economy in a power boat, the 320CC out performs every boat in its class. From rod holders and livewells to plush seating and a smooth ride, it's a fishing machine that keeps the family in mind.

3  
2  
0  
C  
C



LOA //	31' 10"
BEAM //	10' 2"
DRAFT //	22"
DRY WEIGHT (W/O ENGINES) //	7700 LBS
FUEL //	300 GAL
MAX HP //	700HP



# 340CC



3  
4  
0  
C  
C

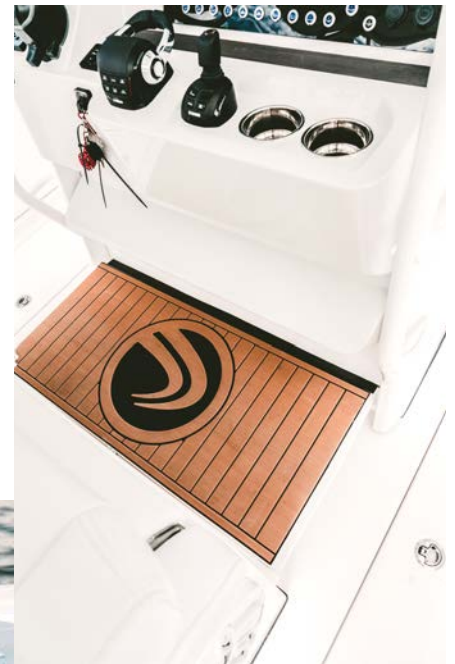
“Both sides of its nature—the fishy part and family part—meld into a pleasing combination that will put a smile on everyone’s face.”  
- *Boating Magazine*

“The new 340CC blends serious fishing features with posh comfort and commanding performance.”  
- *Sport Fishing Magazine*



It's the first 34-footer truly made for the angler and family. The key features: clear-view glass front, customizable pressure, visibility step and a 2000gph integrated pump. It's fishy with 28 rod holders throughout the boat, eight are dual-purpose rod/cup holders, and a standard 32-gallon livewell. Storage is key for the family. Underneath the forward lounge seat is an expansive amount of storage for gear, dive tanks or fenders, buckets, bow table and forward backrests.

3  
4  
0  
C  
C



**SEAKEEPER**  
Optional



LOA //	33' 4"
BEAM //	10' 2"
DRAFT //	22"
DRY WEIGHT (W/O ENGINES) //	11,500 LBS
FUEL //	330 GAL
MAX HP //	800HP





# Crossover Series

They are the chameleons of our Fleet. Ready for any adventure. Multi-interest meets multi-purpose — dual consoles for the do-it-all family. Offshore, inshore, cruise, fish, dive and ski, all adventures welcomed. These boat have the versatility, safety and durability for all your fun on the water. Our crossover models are designed to marry the best features of both bowriders and center consoles.

Yes, capable can be cool.



# 230CX



2  
3  
0  
C  
X

“It is the SUV of salt water, bringing the spacious seating of a bowrider to the fishability of a center-console EdgeWater’s Crossover 230CX is a bull’s-eye in that market both for its size and the features packed into it.”  
- *Boating Magazine*

“With so much to offer in a boat this size, the latest EdgeWater is bound to be a crowd-pleaser. Anyone looking for a fun and dependable multitasker that won’t break the bank should check out the 230CX and take one for a ride.”  
- *Salt Water Sportsman Magazine*



The 230CX boasts Single-Piece Infusion, a fully-finished bilge and more standard features than other boats in its class. Packaged with Yamaha Four Stroke power up to 300hp, this boat is sure to impress the family. It's feature rich and has all of the comfort and performance every family needs on the water.

2  
3  
0  
C  
X



LOA //	24' 4"
BEAM //	8' 6"
DRAFT //	15"
DRY WEIGHT (W/O ENGINES) //	4400 LBS
FUEL //	106 GAL
MAX HP //	300HP

"The 248CX is built stiff and strong using cutting edge techniques and the best materials."  
- *Boating Magazine*

"The 248CX responds and rides exceptionally in all kinds of sea conditions. The fixtures are yacht-quality."

- Edmund, 230CX Owner,  
North Carolina

2  
4  
8  
C  
X



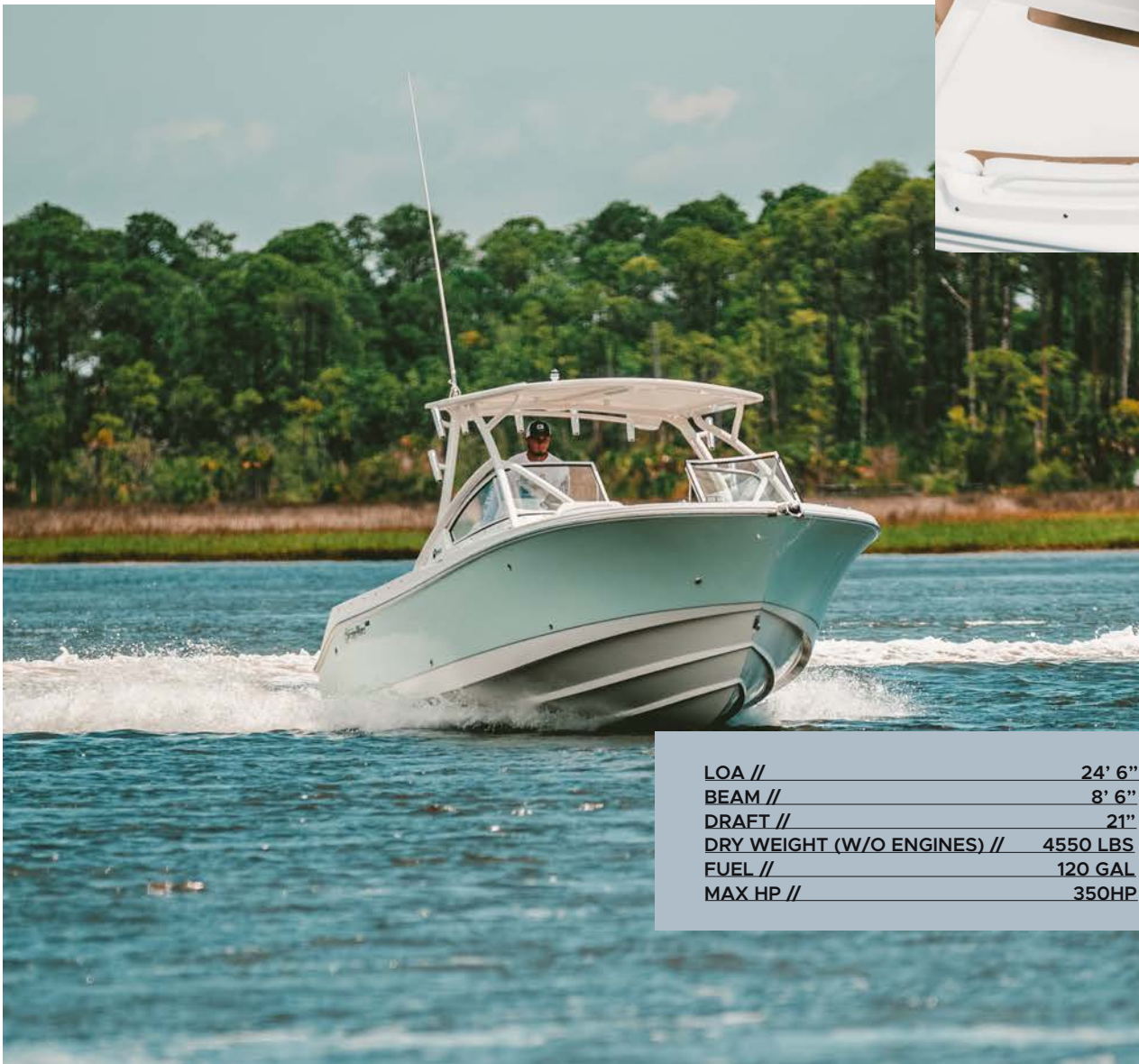
248CX





The 248CX Crossover is the perfect vessel for any active lifestyle. The spacious cockpit provides ample room for entertaining family and the expansive deep bow seating provides a sanctuary of comfort for the little ones. Choose any adventure on this boat, the 248CX can accommodate your entire crew's agenda.

2  
4  
8  
C  
X



LOA //	24' 6"
BEAM //	8' 6"
DRAFT //	21"
DRY WEIGHT (W/O ENGINES) //	4550 LBS
FUEL //	120 GAL
MAX HP //	350HP

"I have owned several brands and I had always thought I had chosen wisely. In the end, they always came up short. I came across the 280CX and could not believe the difference. The boat was spectacular — ride, fit and finish and overall usability are incredible."  
- Robert, 280CX Owner, North Carolina



2  
6  
2  
C  
X



# 262CX



The 262CX is the perfect union of offshore performance and unsinkability with the seating, storage, amenities and versatility of an offshore boat. With its deep-V hull, Single Piece Infusion® (SPI) construction, high-grade components, and the reliability of Yamaha four-stroke technology, the 262cx operates in a class of all its own. Family adventures await.

2  
6  
2  
C  
X



LOA //	26' 5"
BEAM //	9' 3"
DRAFT //	21"
DRY WEIGHT (W/O ENGINES) //	5700 LBS
FUEL //	163 GAL
MAX HP //	500HP

2  
8  
0  
C  
X

# 280CX



Reliable, tons of horsepower and comfortable enough for twelve.

"A rugged offshore build with familial features while not neglecting the fishing mission."  
- *Boating Magazine*



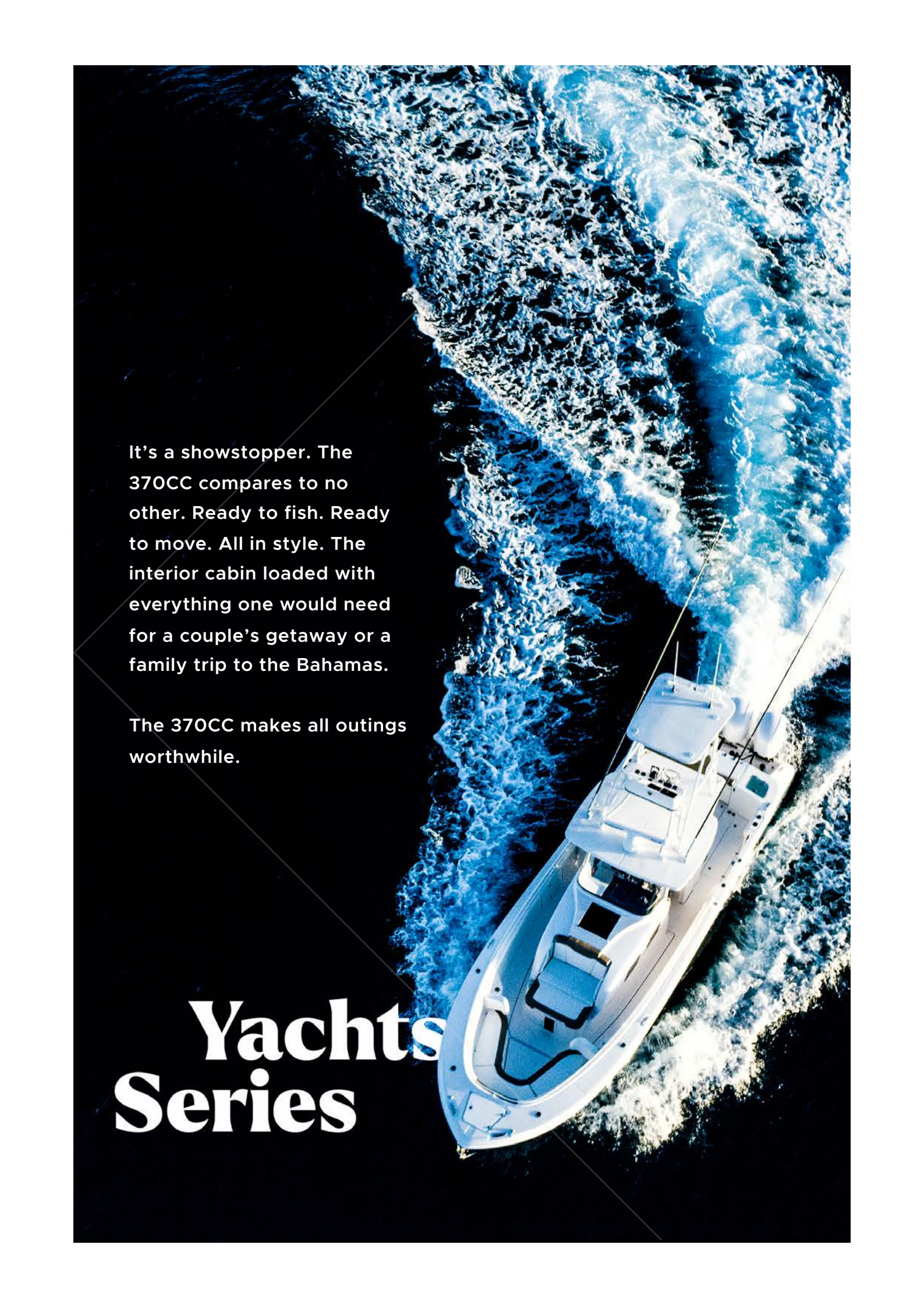


The 280CX fulfills the requirements and demands of every outdoor enthusiast. From the overstated V-Berth to spacious bow area and dance floor size cockpit the 280Cx has the ability to take anything you give her. This boat makes it possible to escape and create memories every day.

2  
8  
0  
C  
X



LOA //	28'
BEAM //	9' 6"
DRAFT //	20"
DRY WEIGHT (W/O ENGINES) //	7100 LBS
FUEL //	200 GAL
MAX HP //	600HP



It's a showstopper. The 370CC compares to no other. Ready to fish. Ready to move. All in style. The interior cabin loaded with everything one would need for a couple's getaway or a family trip to the Bahamas.

The 370CC makes all outings worthwhile.

# Yachts Series

"For boaters who like speed, there is the EdgeWater 370cc. It reportedly tops out around 52 knots and cruises at 31 knots while getting 1.3 miles per gallon. She also has an air-conditioned cabin that sleeps two, with a TV, microwave and refrigerator. Twin 200-quart fish boxes and two livewells (45 and 70 gallons) bolster her angling cred."  
- *Yachting Magazine*

"When it came time to step up to a bigger boat, of course I bought the 370CC. Nicest boat I have ever owned. I am thrilled by the amenities and the compliments!"  
- Johnny, 370CC Owner, South Carolina

3  
7  
0  
C  
C



**370CC**





The 370CC is a floating and fast-moving entertainment center with horsepower. This boat has all the goods. Family-friendly mixed with fishability features that combine to make any trip a breeze. It's a beautiful fishing machine that allows any adventure to happen on the water.

3  
7  
0  
C  
C



LOA //	37'
BEAM //	11' 4"
DRAFT //	25"
DRY WEIGHT (W/O ENGINES) //	13000 LBS
FUEL //	385 GAL
MAX HP //	900HP

# Customer Stories





### *Customer Stories*

## **The Perry's New Addition**

**W**e've enjoyed nearly five amazing years

on the 158CS with countless trips to JB's Fish Camp to various islands in the New Smyrna Beach and Edgewater area as well as random trips to the offshore bell buoy," said Jennifer Perry. "She may be little, but she is fierce!"

For the Perrys, it was time for a bigger boat.

"We've always utilized Edgewater's build your own boatbuilder tool on their website to build our dreamboat. The 245CC," she said. "Simply, just to dream!"

Jennifer and her husband, Todd, had a new addition to the family. It seemed that it was time.

"In February 2020, we announced our pregnancy while holding a baby life jacket in front of the 158CS out on the water with the caption: We're going to need a bigger boat."

"With our last name being, Perry. Todd has always said maybe he would name the dreamboat Perrydise. One day after we found out we were expecting a girl. Todd came home from work and said, 'I've been thinking today and the big boat one day will be named: Always Mallie.'

Their daughter's namesake would live on one of their dreams — fitting to say the least. Their daughter is due in August. But the 245CC wasn't into the picture just yet.

With the Covid-19 pandemic sweeping across America and more time at home, Todd was back to dreaming on "boatbuilder" and Jennifer planned on a nursery.

One day during the slow business hours of the shutdown, Todd called Jennifer to let her know the seafoam green 245CC she found a year ago online was still available at the local dealership.

Todd took needing a bigger boat to heart. They found their dreamboat. A 2020 245CC with twin Yamaha 150s, white on white.

"It was exactly the boat we have built online for years," she said. "It was ours a few short days later. Always Mallie was home!"

For the Perrys, it's not just the present moment that brings them smiles on their face. It's the near future. The memories that stay with you for a lifetime.

"We have years ahead of memories to make on her. We are looking forward to one day crossing Atlantic to the Bahamas, exploring the coastline of Florida and maybe even go up the coast to South Georgia," she said. "I guess, we're going to have to catch a few fish here and there too."

The Perrys are part of our family in more ways than one.

"With both of us being born and raised in New Smyrna Beach, Todd being a business owner in Edgewater, there is no coincidence our lifestyle revolves around the water. Our favorite boatbuilder is Edgewater Boats. Our love for the brand has only grown with time."



Customer Stories

# The Davis Family Vacation



**W**hen it comes to the Davis family, the 230CC transformed how they view their Saturdays and Sundays.

“Every weekend is now a vacation for us,” said Laura Davis. “We now can take day trips to Block Island and Newport, Rhode Island — sometimes on the same weekend. We can get to places that were out of our reach before with a smaller, less powerful boat.”

The Davis family discovered EdgeWater at a boat show that was hosted by our dealership Petzold’s Marine. The standard features — that our competitors call options — are what made our boat shine above the rest.

“We found that the 230CC had all the extras we were looking for and they were already standard on the boat,” she said. “After speaking with the salesman at Petzold’s and Kim, the Vice President of Sales and Marketing at Edgewater, we were sold on the features as well as the thought and quality that was put into making this boat.”

The 230CC checks all the boxes for the Davis family.

“It was the perfect mix of function, fishing and family,” she said. “We have two children — a seven-year-old and a ten-year-old — who have fallen in love with boating. After our first 19-foot boat, we wanted to invest in one that would be useful for a very long time.”

The standard feature that sticks out to the Davis family is the stowaway table, but it doesn’t stop there.

“It is perfect for having snacks and lunch without having the pull anchor,” she said. “The 230CC is the perfect size for trailering. We always get comments about how beautiful she is. The white powder coating definitely makes us stand out. It’s also changed how we boat, too. The kids spend the day jumping off the transom swim platform and we can fit all of our toys (grill, paddleboard, kayak) onboard with us.”

Vacation every weekend like the Davis family.

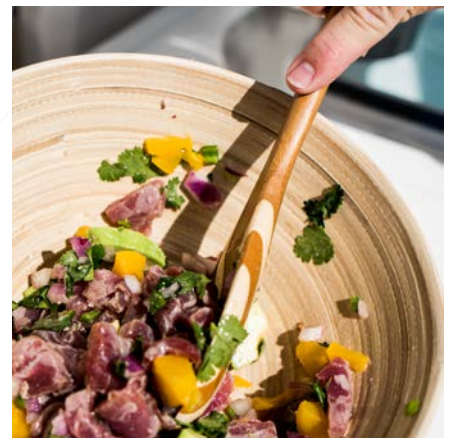


**“Every weekend is now a vacation for us.”**

# Recipes







# Yellowfin Tuna Ceviche

## with Jalapeño Citrus Vinaigrette

*Yellowfin tuna, citrus ingredients, and little spice.  
Great for midday lunch on the boat or right after you catch it.*



### *Ingredients /*

- Yellowfin Tuna (or fish of choice)
- 2 seeded jalapeños, chopped
- 1/4 cup rice wine vinegar
- Lime juice
- Orange juice
- Lemon juice
- 1 Peach
- 1 Avocado
- 1 Red onion

Of course, you could change out tuna for most other fish. From wahoo to snapper, this recipe still holds.

This recipe was prepared aboard our brand new 340CC, which has many different options for its leaning post. In this case, we have the standard kitchenette with 50-gallon livewell to the side. Let's get to it.

Thinly slice your fish. With any fish, if desired, season with sea salt for added taste.

Place your sliced fish into a bowl. Cut onion and avocado, chop jalapeños (seeded), and prepare your citrus ingredients.

Now that you have your fish and add-ins placed into the bowl, onto the vinaigrette.

Squeeze lemon, lime, and orange juice into the bowl.

Add sliced peaches and chopped cilantro.

Add 1/4 rice wine vinegar.

Mix that sucker up. Chill if necessary.

Present to your family and guest. Let them be wowed, not only by that fish you just caught, but by the fresh ingredients that you whipped together for a healthy lunch aboard the boat.



# Sirloin Shish Kebabs

## with Chimichurri

*A staple of weekend boating adventures, sirloin shish kebab with chimichurri. With a grill aboard, make it with ease.*



Our newest recipe is a favorite for the grill. But, it puts an Argentinian spin on it. We made Sirloin Shish Kebabs with chimichurri on the beautiful 370CC, a boat made to host the family and guest. In this 370CC, we have the standard kitchenette with optional grill, perfect for this shindig.

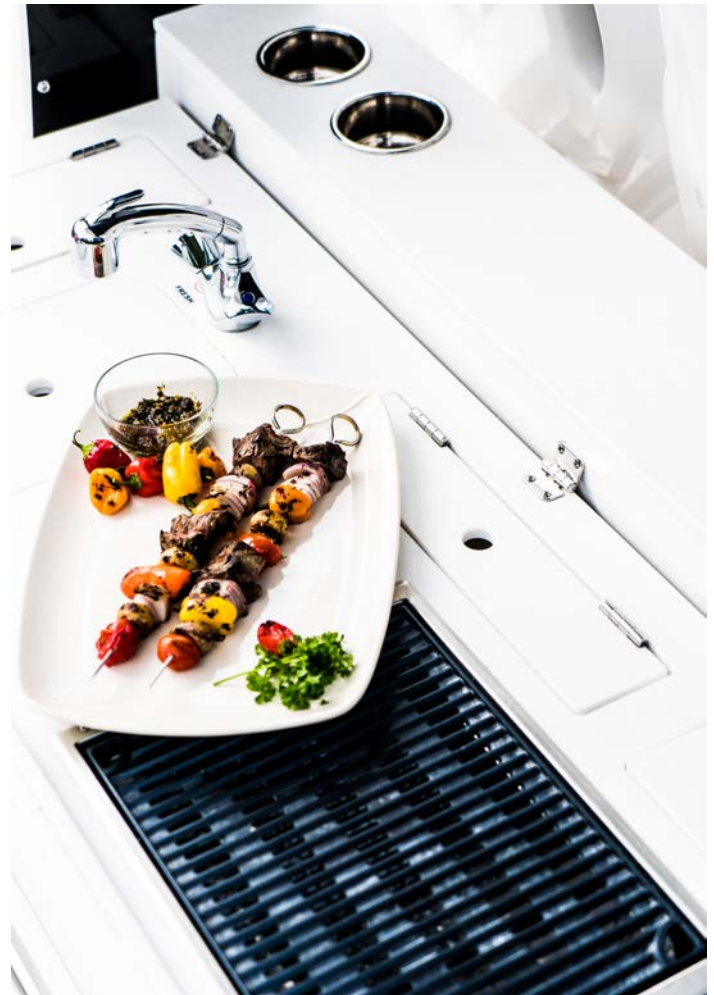
Let's start with the chimichurri to be brushed on the meat and vegetables.  
Chop parsley and peel oregano off the stem. Add 1/4 rice wine vinegar.

Chop garlic and add 3/4 cup of olive oil. Mix all ingredients in bowl to a preferred thickness.

We used baby portabella mushrooms, red onion, cherry tomatoes, and sweet peppers. But, feel free to place on your favorite veggies.

Start to skewer vegetables and sirloin cuts.  
Brush chimichurri across the vegetables and meat. Fire up the grill and place kebabs on high heat.

Get the family and friends around the bow seating area, place on the table and sit back like your a top chef.



### *Ingredients /*

- Top sirloin meat
- Baby portabella mushrooms
- Sweet peppers
- Red onion
- Cherry tomatoes

### *Chimichurri /*

- Parsley
- Oregano
- Garlic
- Olive oil
- Rice wine vinegar



# Conservation Partnership



The International Game Fish Association (IGFA) recently announced that EdgeWater Boats as the newest member of the IGFA's Boat Builders for Billfish Coalition.

Launched in late 2019, the IGFA's Boat Builders for Billfish Coalition is an industry-led alliance created to generate support for the IGFA's efforts in billfish research and advocacy, specifically the IGFA Great Marlin Race (IGMR), the world's most extensive satellite tagging program for billfish.



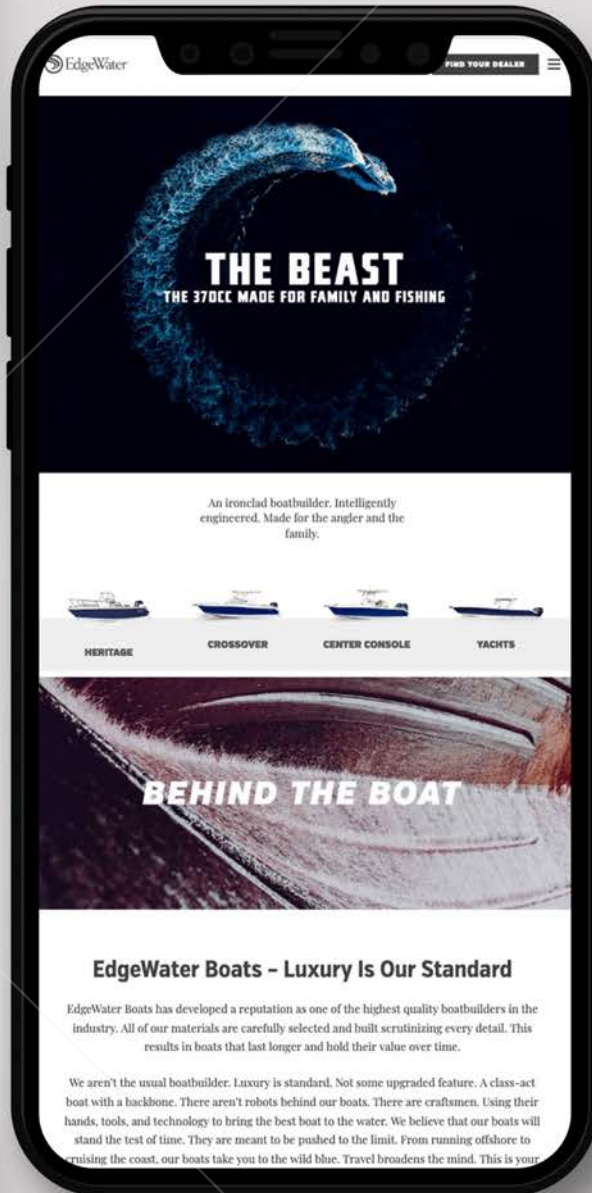


# Conservation Partnership

**"We are very excited to have EdgeWater Boats join the coalition and help us continue our research and advocacy to ensure the future of these incredible game fish."**

*- IGFA President Jason Schratwieser*

gineered. Made for



## Follow us

Instagram, Facebook, and Youtube

## Newsletters

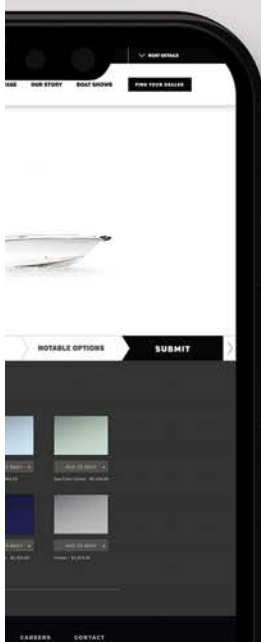
Delivered to your inbox on all-things EdgeWater

## Web

Read up on latest how-tos, boatbuilding, and travel adventures.

## Build Your Boat

Create your very own EdgeWater in minutes. Pick the color. The engines. The whole shebang.





We only work with the best OEMs in the market. Ones that strive to be the trendsetters in their fields. From power to electronics, these partnerships stand above the rest.



 EdgeWater